

IPC41C07

thermal imaging ptz cctv camera



40X optical zoom ip camera visible daylight 14km vehicle thermal imaging ptz cctv camera for mining surveillance monitoring

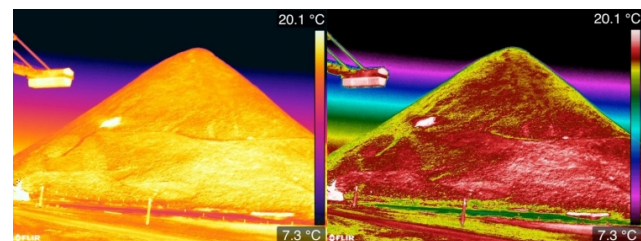


Key Features

High-end custom intelligent surveillance camera. A multi-function device be combined with thermal imaging camera, visible CMOS, precise actuating and gearing unit, digital decoder, high-performance image processing unit and control unit.

Application

- Motion detection, Disk alarm, I/O alarm, IVS alarm, Temperature detection & alarm
- Pseudo-color Setting White-hot/Black-hot/Rainbow/Ironbow etc. up to 15 modes
- Support human/vehicle detection, fire point detection and smoke & fire detection (ship detection optional) Intrusion, Single line crossing, Double line crossing, Loitering, Wrong-way, Enter area, Leave area (these 7 function support accurate detection of people/vehicles), People counting
- 3 temperature measurement rule types, 20 rules in total, 1 full screen, 19 others (spot, areas, line).
- IPv4/IPv6 ,HTTP,RTSP/RTP/RTCP, TCP/UDP, DHCP, DNS, PPPOE, SMTP, 802.1x
- SD Card Slot Built-in, up to 256GB



Product Specifications

Model		IPC41C07
Thermal Distance (DRI)	Vehicle (2.3x2.3m)	Detection: 6.3km; Recognition: 1.8km; Identification: 0.9km
	Human (1.8x0.6m)	Detection: 2.5km; Recognition: 0.7km; Identification: 0.35km
	Fire Detection (2x2m)	4km
	IVS Range (IR)	2.3km for Vehicle; 0.8km for Human (B/W)
Thermal Sensor	Sensor	5th generation uncooled FPA sensor
	Effective Pixels	384x288 50Hz
	Pixel Size	17μm
	NETD	≤45mK
	Spectral Range	7.5~14μm, LWIR
Thermal Lens	Focal length	75mm Fixed
	FOV	18.5°×13.9°
	Angular radian	0.227mrad
Visible Distance (DRI)	Vehicle (2.3x2.3m)	Detection: 14km; Recognition: 8.6km; Identification: 4km
	Human (1.8x0.6m)	Detection: 5.6km; Recognition: 3.5km; Identification: 1.5km
Visible Camera	Sensor	1/2.8" Star Level CMOS, Integrated ICR Dual Filter D/N Switch
	Resolution	1920(H)x1080(V) fps 25/30
	SD Card	Support
Visible Lens	Focal Lens	8-320mm / 40X Optical Zoom
	Image Stabilization	1/1.8" Progressive Scan CMOS
	Focus Control	Manual/Auto
PTZ	Patrol	6*patrol route, 1* patrol line
	Rotation	Pan: 0~360°, tilt: -90~+90°
	Speed	Pan: 0.01~100°/S, Tilt: 0.01~60°/S
	Preset	255
	Enhance	Fan/Wiper/Heater attached
Environmental	Operate Temp	-25 ~+60 (-40 optional)
	Storage Temp	-35 ~+75
	Humidity	<90%
	Ingress Protect	IP66
	Housing	PTA three-resistance coating, Seawater corrosion resistance, Aviation waterproof plug
	50WPower	50W

